

Display Parameters

Sl. N.	Display Parameters	SMM 01 (1 Ph 5-30A)	DIN 05 (3 Ph-/5A Cl. 0.5s)	DIN 10 (3 Ph-/5A Cl. 1.0)	DIN 60 (3 Ph 10-60A Cl. 1.0)	DIN 80 (3 Ph 20-80A Cl. 1.0s)
1.	LCD Segment Check		√	√	√	√
2.	Serial No.		√	√	√	√
3.	RTC		√	√	√	√
4.	Phase to Neutral Voltage for 1 Phase	√				
5.	Phase to Neutral Voltage for all the 3 Phase		√	√	√	√
6.	Average Phase to Neutral Voltage		√	√	√	√
7.	Current for all the 3 Phase		√	√	√	√
8.	Total Current	√	√	√	√	√
9.	Active Power for all the 3 Phase		√	√	√	√
10.	Total Active Power	√	√	√	√	√
11.	Apparent Power for all the 3 Phase		√	√	√	√
12.	Total Apparent Power		√	√	√	√
13.	Reactive Power for all the 3 Phase		√	√	√	√
14.	Total Reactive Power		√	√	√	√
15.	Power factor for all the 3 Phase		√	√	√	√
16.	System Power factor		√	√	√	√
17.	Frequency		√	√	√	√
18.	Phase to Phase Voltage		√	√	√	√
19.	Average Phase to Phase Voltage		√	√	√	√
20.	EB kW MD with Date & Time		√	√	√	√
21.	DG kW MD with Date & Time		√	√	√	√
22.	EB kVA MD with Date & Time		√	√	√	√
23.	DG kVA MD with Date & Time		√	√	√	√
24.	EB Run On Hrs.		√	√	√	√
25.	DG Run On Hrs.		√	√	√	√
26.	Total On Hrs.		√	√	√	√
27.	EB Active Energy	√	√	√	√	√
28.	DG Active Energy		√	√	√	√
29.	Total Active Energy		√	√	√	√
30.	Model No.		√	√	√	√
31.	CT Ratio		√	√	√	√
32.	DG kW MD with Date & time		√	√	√	√
33.	EB KVA MD with Date & Time		√	√	√	√
34.	DG KVA MD with Date & Time		√	√	√	√
35.	EB run on Hrs.		√	√	√	√
36.	DG run on Hrs.		√	√	√	√
37.	Total on Hrs.		√	√	√	√
38.	DG Active energy		√	√	√	√
39.	Model number		√	√	√	√
40.	CT Ratio		√	√		
41.	Communication RS 485		√	√	√	√
42.	Pulse output	√				

HEP/INDRILL/02-23

**HPL Electric & Power Ltd**  
Corp. Office: Windsor Business Park, B-1D,  
Sector-10, Noida, U.P. - 201301, INDIA.  
Tel.: +91-120-4656300, Fax: +91-120-4656333  
Registered Office: 1/20, Asaf Ali Road, New Delhi - 110 002, INDIA.  
E-mail: hpl@hplindia.com

Customer Care No. :  
18004190198

www.hplindia.com

\* This document is not a contract \* As part of our continuous improvement processes the specifications are subject to change without prior notice

# Multi Function Energy Meter DIN Rail Series

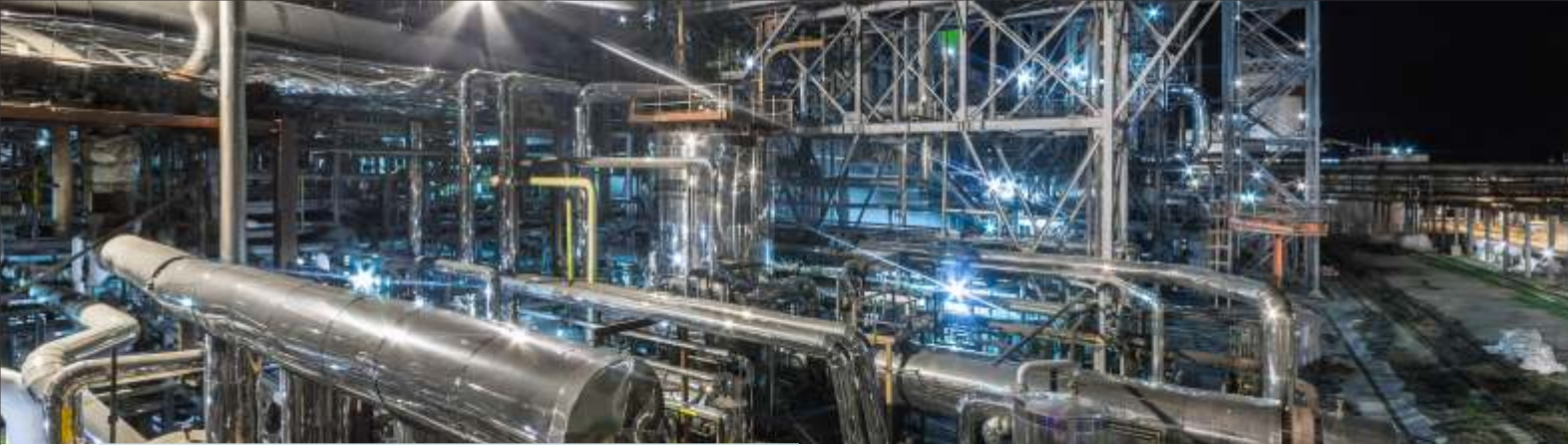


### Some Unique Features :

- Suitable for 1 Phase & 3 Phase LT Network
- Parameter lock feature
- Modular Enclosure & DIN-Rail mounting
- Suitable for Dual Source application
- RS485 Modbus Communication for 3 Phase & Pulse Output for 1 Phase



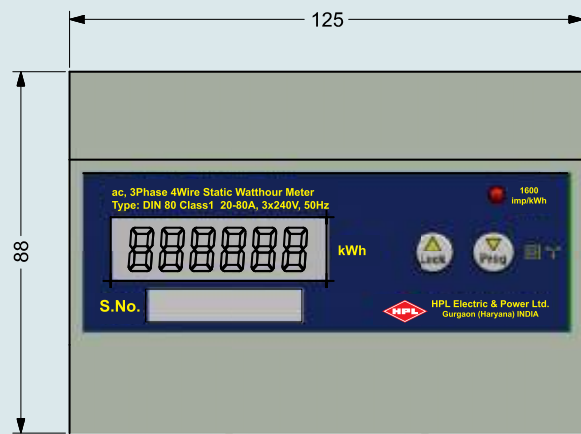
METERING



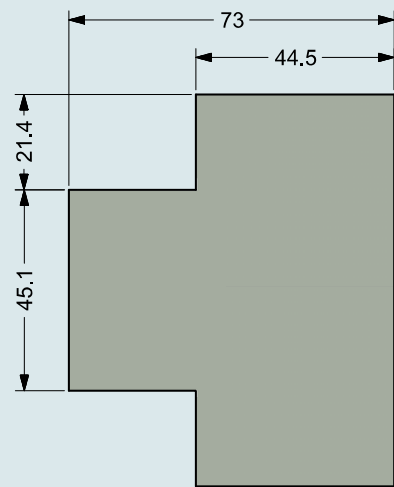
**Models Available**

S.No.	Model Number	Description
1	SMM 01	5-30A class 1.0
2	DIN10	-/5A Cl. 1.0
3	DIN05	-/5A Cl. 0.5
4	DIN60	10-60A Cl. 1.0
5	DIN80	20-80A Cl. 1.0

**Front View**

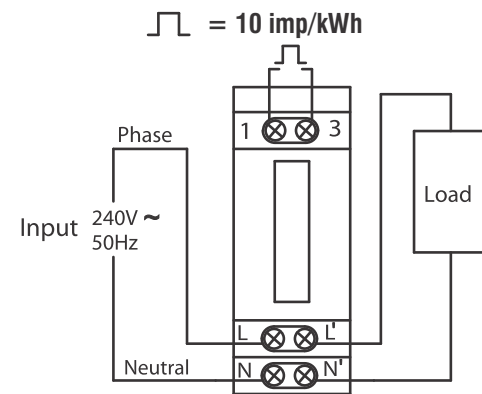


**Side View**

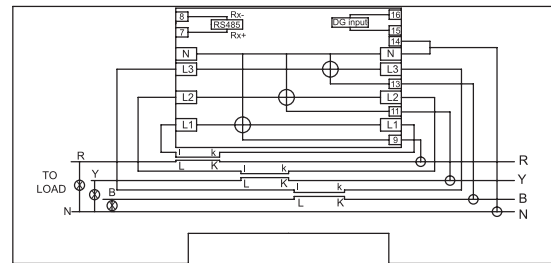


**Connection Diagram**

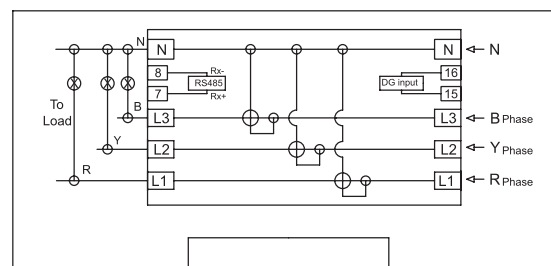
For Single Phase Meter



For LT - CT Operated Meter:



For Direct Connected Meter:



**Technical Specifications**

	SINGLE PHASE SMM01	THREE PHASE DIN60, DIN80	LTCT DIN10, DIN05
STANDARD APPLICABLE	IEC62053-21	IEC62053-21	IEC62053-21
DIMENSIONS	17.5x82mm (WxH)	125x88mm (WxH)	125x88mm (WxH)
<b>IP PROTECTION</b>			
FRONT PROTECTION	IP 50	IP 50	IP 50
CASE PROTECTION	IP-20	IP-20	IP-20
CURRENT RATING	5-30A	10-60A & 20-80A	-/5A & -/1A
REF VOLTAGE	240 V	3x240 V	3x240 V
FREQUENCY	50Hz	50Hz	50Hz
STARTING CURRENT	0.4% of basic Current	0.4% of basic Current	0.2% of basic Current
DISPLAY	Auto Scroll & Push Button	Auto Scroll & Push Button	Auto Scroll & Push Button
POWER CONSUMPTION	Less Than 1W	Less Than 1W	Less Than 1W
SCROLL LOCK FEATURE	Yes	Yes	Yes
PROGRAMMABLE PARAMETERS	N/A	N/A	CT Primary & secondary, reset of energy Through password, MD rest, slave address & Baud rate
COMMUNICATION	Pulse O/P	RS485	RS485
BAUD RATE	N/A	4800/9600/19200 BPS	4800/9600/19200BPS
STOP BIT	N/A	1	1
BYTE SIZE	N/A	16	16
SUITABLE FOR DUAL SOURCE	N/A	Yes	Yes

